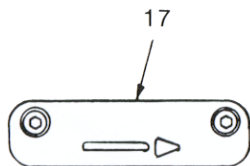


**PVV SERIES
VARIABLE VOLUME
VANE PUMP
MODEL PVV125/142 *** 30**

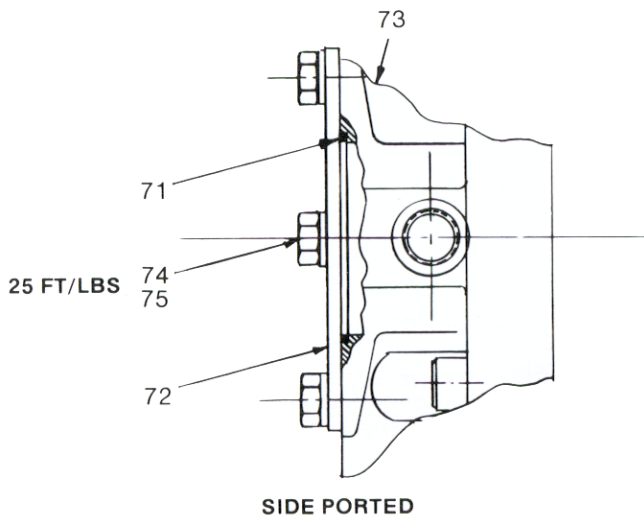
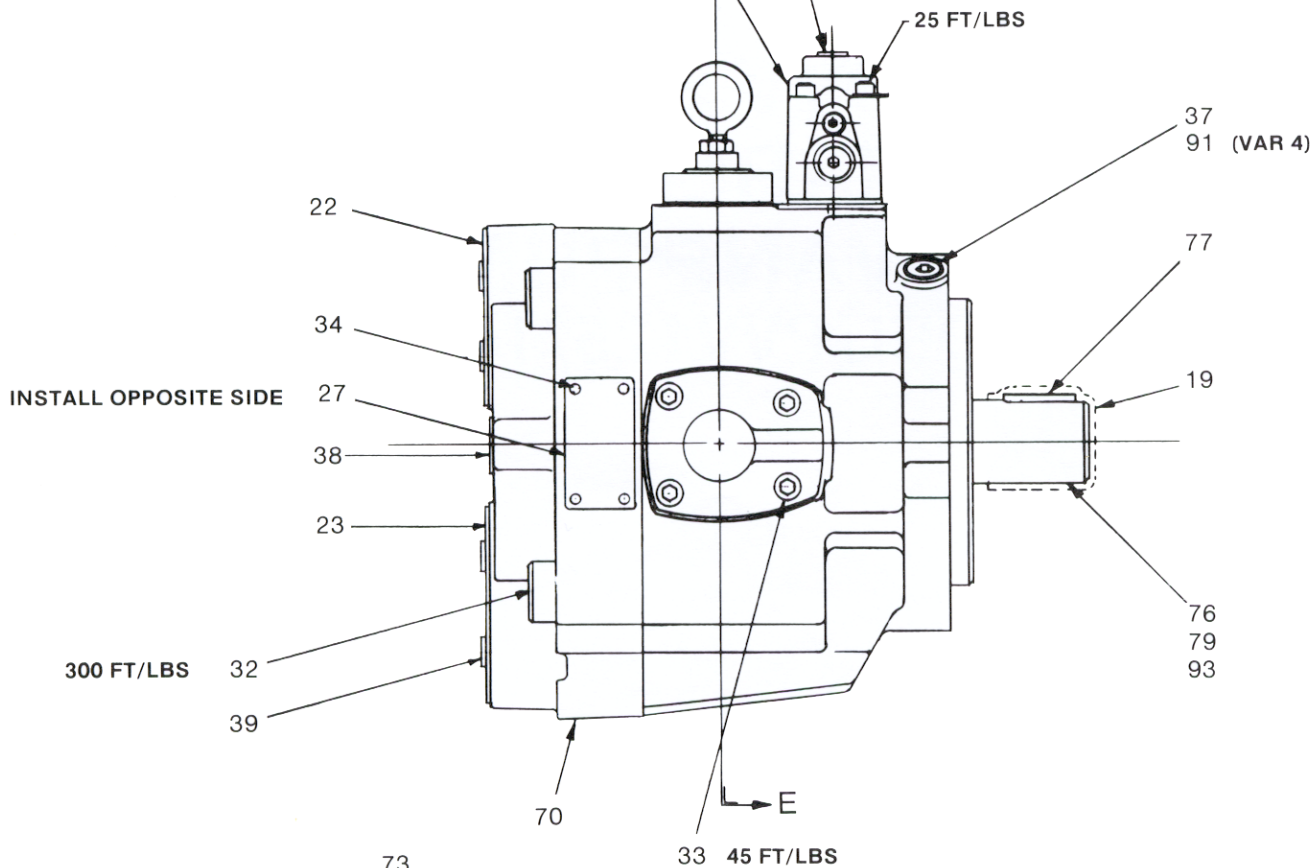


VIEW BB

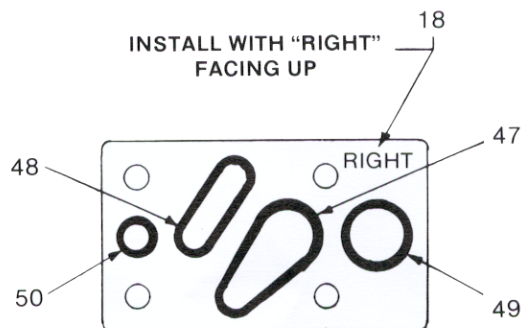
INSTALL WITH ARROW
POINTING AS SHOWN

M ME A S SE SI PI H
101 104 107 111 115 119 122 126

M ME A S SE
102 105 108 109 113 117

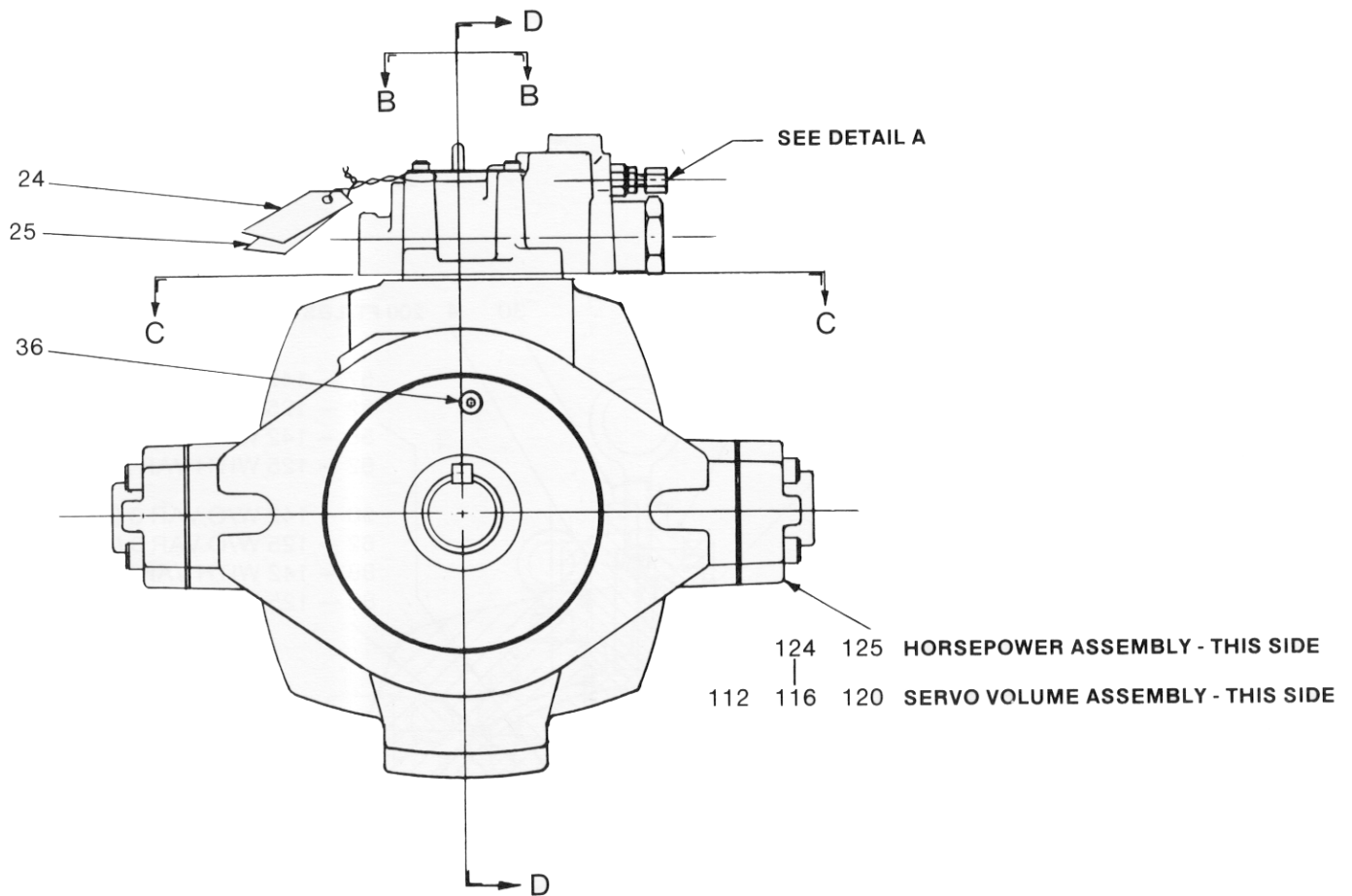


INSTALL WITH "RIGHT"
FACING UP

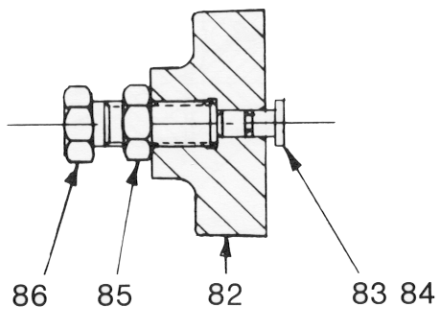


SECTION CC

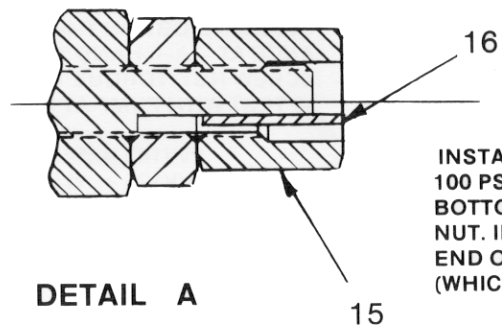
NOTE: VARIATION 6 PUMP TO BE SHIPPED WITH
PLATE INSTALLED UNLESS PUMP IS
FACTORY MOUNTED ON REAR.



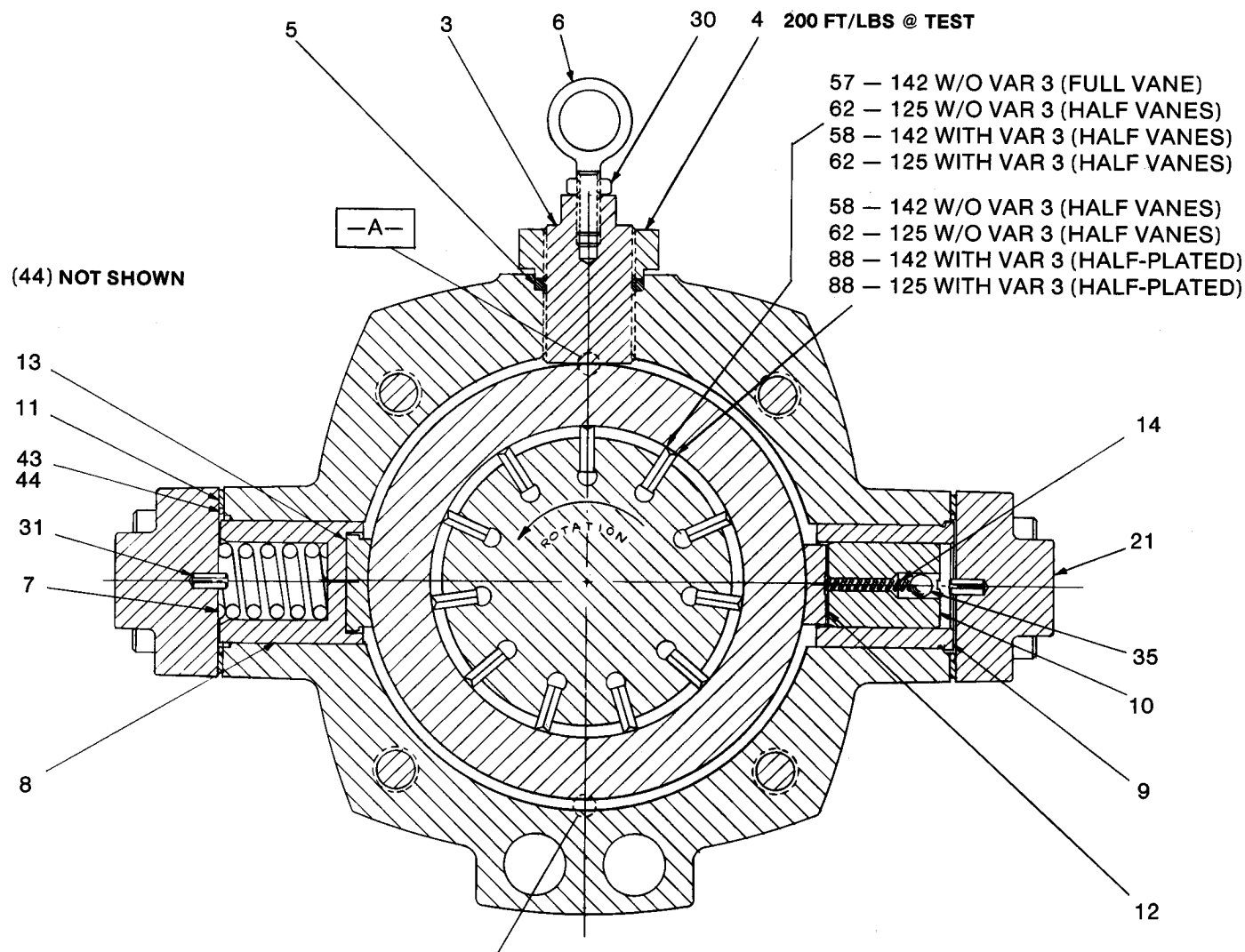
RIGHT HAND ROTATION



MAX VOLUME OPTION



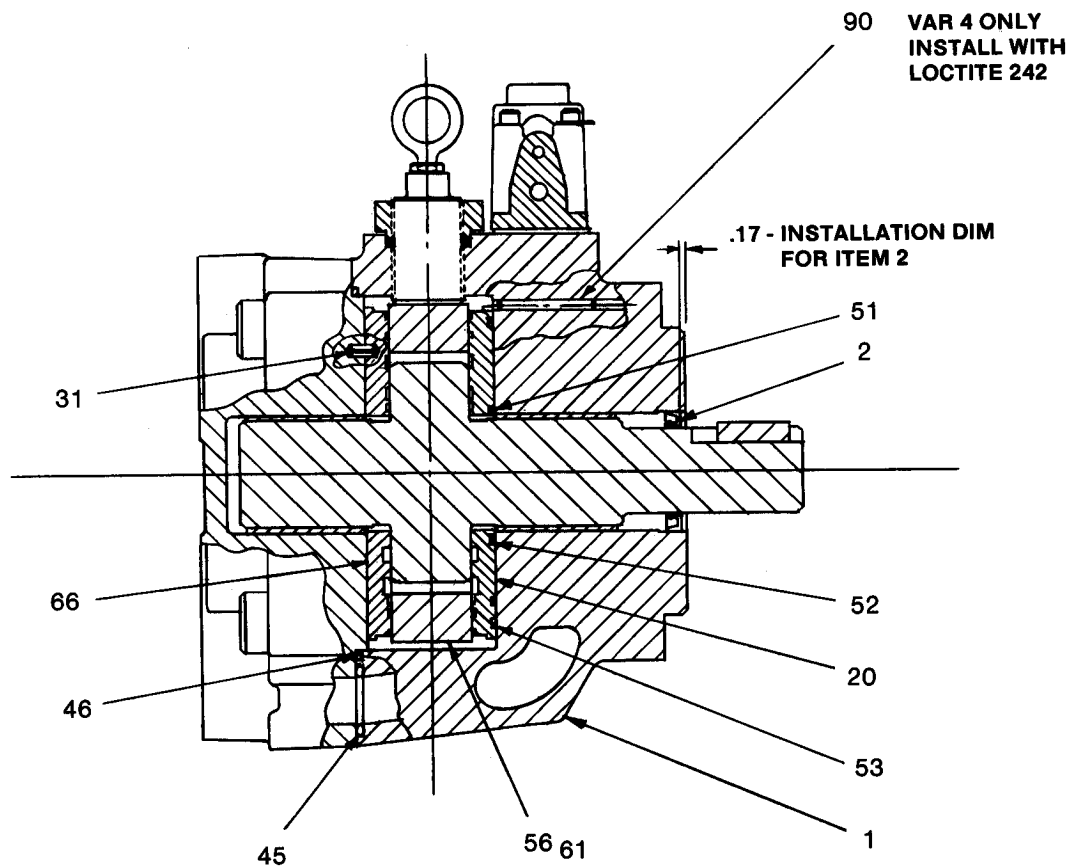
INSTALL @ TEST - SET COMPENSATOR 100 PSI ABOVE MAX PUMP RATING. BOTTOM LOCK NUT AND ADJUSTING NUT. INSTALL LOCKING TAB FLUSH TO END OF ADJUSTING NUT OR STEM (WHICH EVER EXTENDS THE MOST).



WITH REAR COVER AND PISTON COVERS
 REMOVED. ALLOW CAM RING TO CONTACT
 HOUSING AT THIS POINT. ADJUST THRUST
 SCREW TO OBTAIN THE FOLLOWING CLEAR-
 ANCE AT -A-. HAND TIGHTEN THRUST
 SCREW NUT. TORQUE TO SPECIFIED LEVEL
 @ TEST WITH PUMP AT PRESSURE.

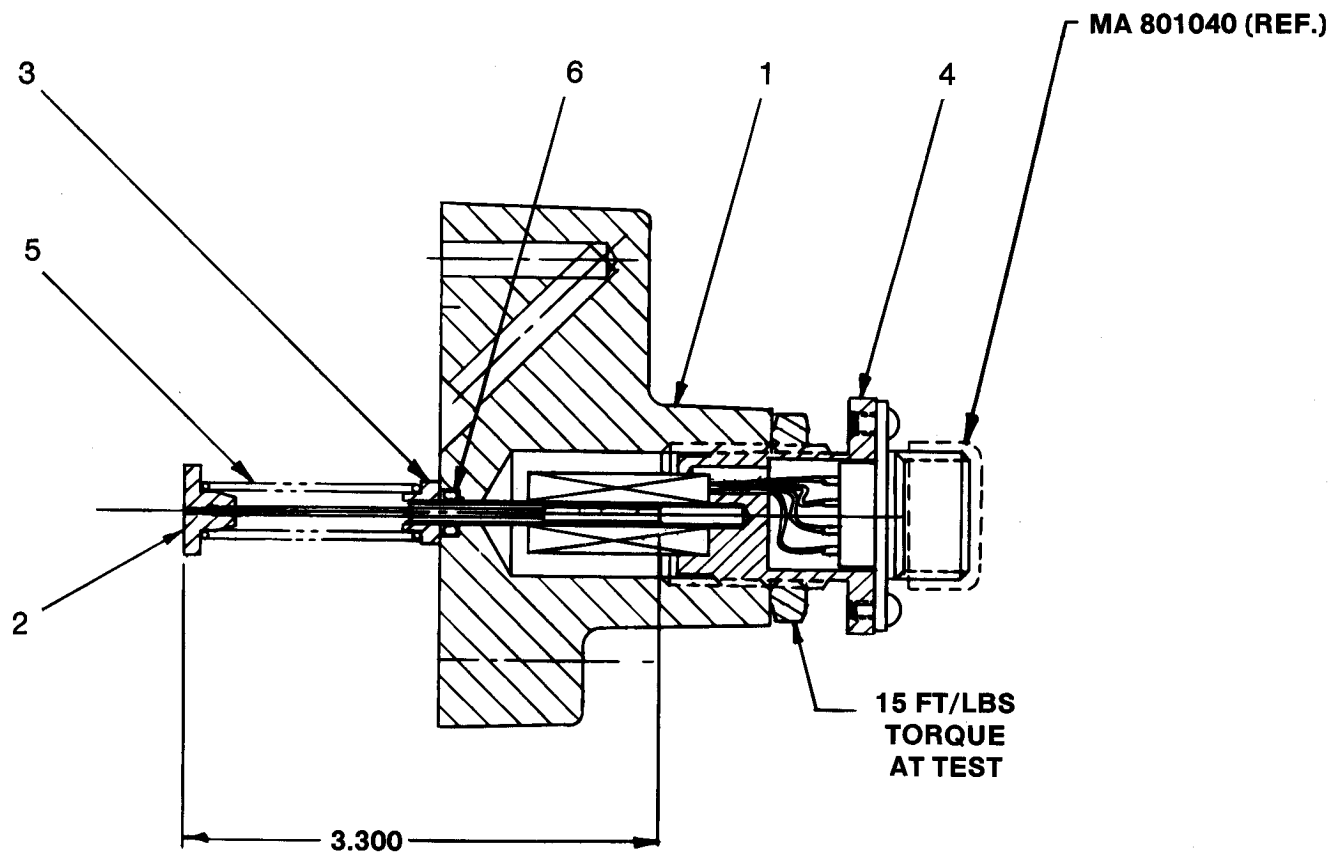
PVV142 = .145
 PVV125 = .125

SECTION EE



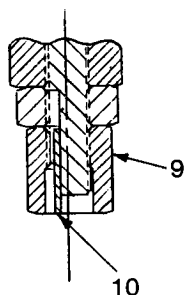
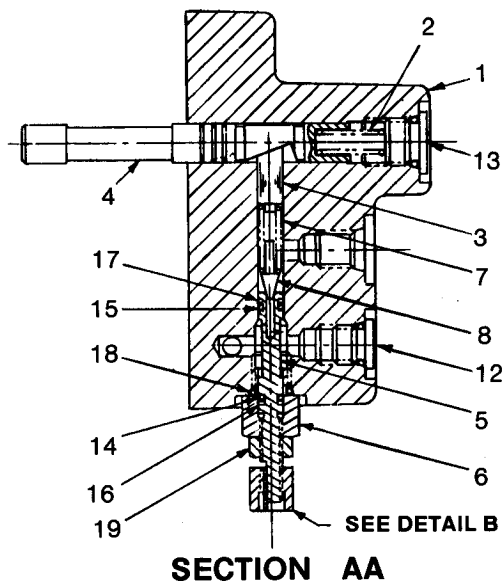
SECTION DD

SERVO PUMP ASSEMBLY



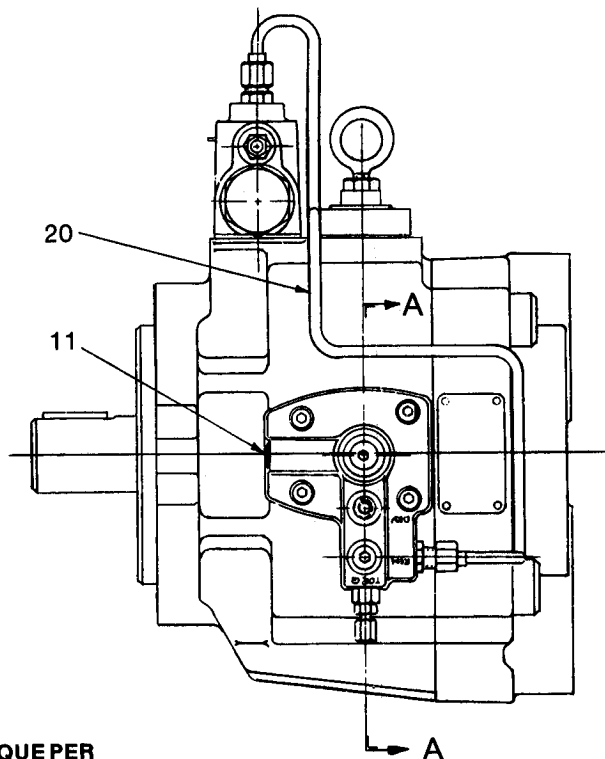
PARTS LIST			
ITEM	QUANTITY	PART NUMBER	DESCRIPTION
1	1	MC800822	SERVO VOLUME HOUSING
2	1	MA800824	PROBE SUPPORT
3	1	MA800825	SPRING GUIDE
4	1	MC694108	LVDT ASSEMBLY
5	1	MA800823	SPRING
6	1	2105N-7	O-RING
7	1	MA801056	BULLETIN - SERVO

RIGHT HAND HORSEPOWER ASSEMBLY



DETAIL B

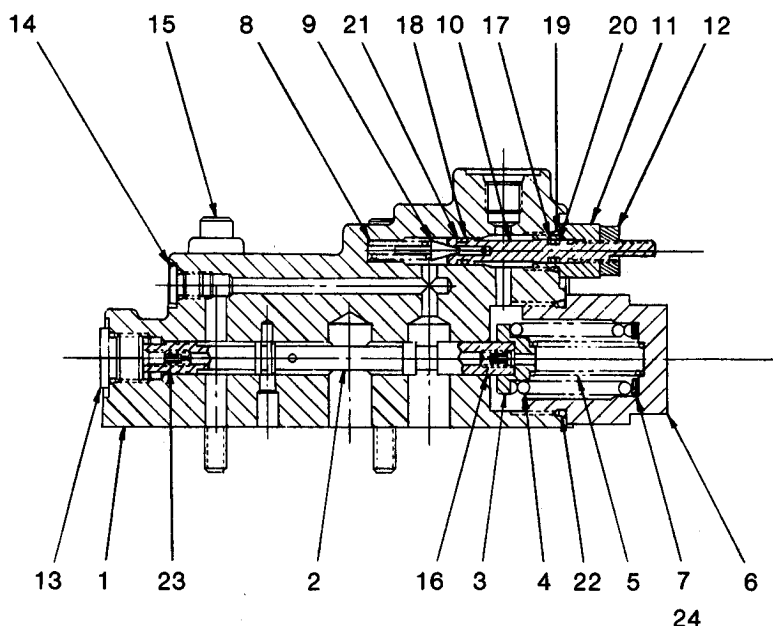
INSTALL @ TEST - SET MAX TORQUE PER TEST SPECIFICATION. INSTALL LOCKING TAB FLUSH TO END OF STEM OR ADJUSTING NUT (WHICH EVER EXTENDS THE MOST).



ITEM	PART NUMBER	QUANTITY	DESCRIPTION
1	MC801086	1	HOUSING
2	MA801079	1	SPRING
3	MA801080	1	BUTTON
4	MA801081	1	SPOOL
5	MC786100	1	R/V SEAT
6	MB755342	1	PLUG
7	MA679935	1	SPRING
8	MA785379	1	DART
9	MA786771	1	ADJUSTING NUT
10	MA786772	1	LOCKING TAB
11	108 x 2	1	-2 PLUG W/O-RING
12	108 x 4	1	-4 PLUG W/O-RING
13	108 x 6	1	-6 PLUG W/O-RING
14	2007N-7	1	O-RING
15	2008N-7	1	O-RING
16	107 x 7	1	BACK-UP
17	107 x 8	1	BACK-UP
18	3904N-9	1	O-RING
19	16 x 23	1	NUT
20	MB801168	1	H.P. TUBING ASSEMBLY - R.H.

NOTE:

CAUTION - BACK OFF ITEM 5 (R/V SEAT) FULL CCW BEFORE INSTALLING ASSEMBLY ON PUMP.

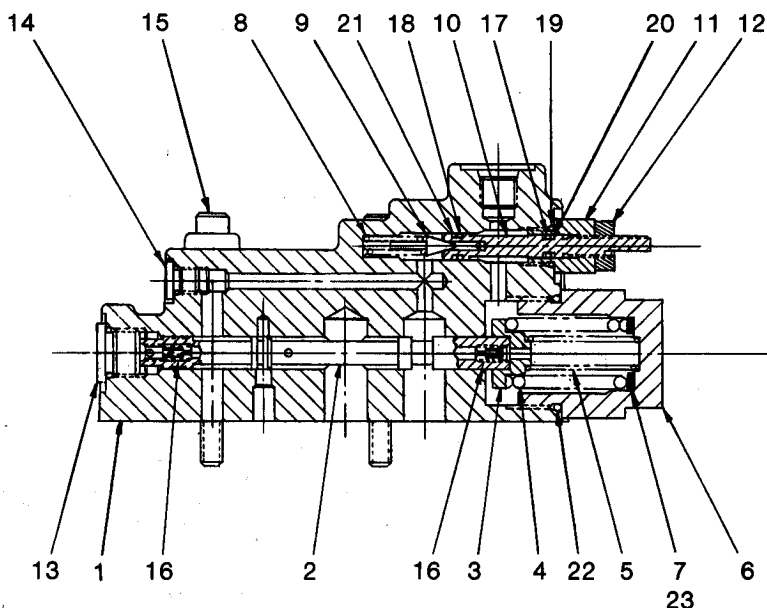


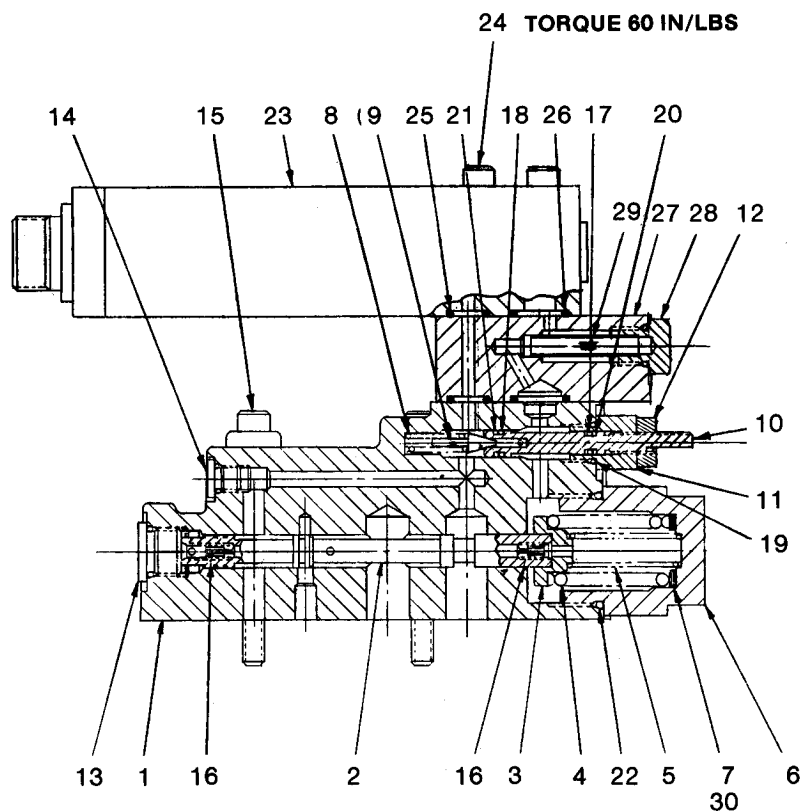
ITEM	PART NUMBER	QUANTITY	DESCRIPTION
1	MC801137	1	COMPENSATOR BODY
2	MB801135	1	COMPENSATOR SPOOL
3	MA801133	1	SPRING GUIDE
4	MA801132	1	COMPENSATOR SPRING
5	MA801131	1	BIAS SPRING
6	MC801134	1	COMPENSATOR CAP
7	MA801140	A/R	SHIM (NOM) - 3 REQ'D
8	MA785170	1	SPRING
9	MA785379	1	DART
10	MA786100	1	R/V SEAT
11	MA755342	1	RETAINER
12	16 x 23	1	NUT
13	108 x 6	1	-6 PLUG W/O-RING
14	108 x 2	1	-2 PLUG W/O-RING
15	10 x 232	4	CAP SCREW
16	28 x 323	1	SET SCREW
17	2007N-7	1	O-RING
18	2008N-7	1	O-RING
19	3904N-9	1	O-RING
20	107 x 7	1	BACK-UP
21	107 x 8	1	BACK-UP
22	3916N-9	1	O-RING
23	MA801141	1	ORIFICE
24	MA801225	A/R	SHIM (NOM - 1 REQ'D)

COMPENSATOR ASSEMBLY (ME, SE & A) EXTERNAL SENSING

COMPENSATOR ASSEMBLY (M & S) INTERNAL SENSING

ITEM	PART NUMBER	QUANTITY	DESCRIPTION
1	MC801137	1	COMPENSATOR BODY
2	MB801135	1	COMPENSATOR SPOOL
3	MA801133	1	SPRING GUIDE
4	MA801132	1	COMPENSATOR SPRING
5	MA801131	1	BIAS SPRING
6	MC801134	1	COMPENSATOR CAP
7	MA801140	A/R	SHIM (NOM - 3 REQ'D)
8	MA785170	1	SPRING
9	MA785379	1	DART
10	MA786100	1	R/V SEAT
11	MA755342	1	RETAINER
12	16 x 23	1	NUT
13	108 x 6	1	-6 PLUG W/O-RING
14	108 x 2	1	-2 PLUG W/O-RING
15	10 x 232	4	CAP SCREW
16	MA801141	2	ORIFICE
17	2007N-7	1	O-RING
18	2008N-7	1	O-RING
19	3904N-9	1	O-RING
20	107 x 7	1	BACK-UP
21	107 x 8	1	BACK-UP
22	3916N-9	1	O-RING
23	MA801225	A/R	SHIM



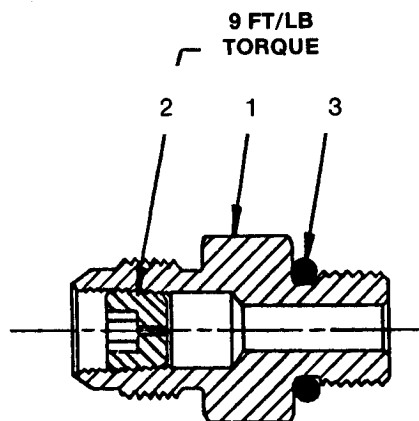


COMPENSATOR ASSEMBLY WITH MANIFOLD MOUNTED ASSEMBLY

ITEM	PART NUMBER	QUANTITY	DESCRIPTION
1	MC801145	1	COMPENSATOR BODY
2	MC801135	1	COMPENSATOR SPOOL
3	MA801133	1	SPRING GUIDE
4	MA801132	1	COMPENSATOR SPRING
5	MA801131	1	BIAS SPRING
6	MC801134	1	COMPENSATOR CAP
7	MA801140	A/R	SHIM (NOM - 3 REQ'D)
8	MA785170	1	SPRING
9	MA785379	1	DART
10	MA786100	1	R/V SEAT
11	MA755342	1	RETAINER
12	16 x 23	1	NUT
13	108 x 6	1	-6 PLUG W/O-RING
14	108 x 2	1	-2 PLUG W/O-RING
15	10 x 232	4	CAP SCREW
16	MA801141	2	ORIFICE
17	2007N-7	1	O-RING
18	2008N-7	1	O-RING
19	3904N-9	1	O-RING
20	107 x 7	1	BACK-UP
21	107 x 8	1	BACK-UP
22	3916N-9	1	O-RING
23	MB694454	1	PPC-MANIFOLD MNT.
24	10 x 232	2	CAP SCREW
25	2012N-9	2	O-RING
26	2015N-9	2	O-RING
27	MB801211	1	FILTER BLOCK
28	MB801212	1	FILTER CAP W/O-RING
29	MA801213	1	FILTER SCREEN
30	MA801225	A/R	SHIM (NOM - 1 REQ'D)

ORIFICE FITTING ASSEMBLY

USED WITH COMPENSATORS FOR:
ME, SE, & A CONTROL OPTIONS.
(EXTERNAL SENSING)



ITEM	PART NO.	QUANTITY	DESCRIPTION
1	MB786686	1	FITTING
2	MA800599	1	ORIFICE - .035"
3	3-904N-9	1	O-RING

CODE	ITEM	PART NUMBER	QUANTITY	DESCRIPTION
142 OR 125	1	MD801162	1	FRONT HOUSING
	2	MB800261	1	SHAFT SEAL
	3	MB800264	1	THRUST SCREW
	4	MB800263	1	THRUST SCREW NUT
	5	MA800262	1	SEAL RING
	6	MA800299	1	EYE BOLT
	7	MA800257	1	SPRING
	8	MB801175	1	SERVO PISTON
	9	MB801087	1	BIAS PISTON SLEEVE
	10	MB801097	1	BIAS PISTON
	11	MB800303	2	SEAL PLATE
	12	MA801100	1	CAM BEARING
	13	MB800620	1	CAM BEARING
	14	MA800535	1	PRIME SPRING
	15	MA786771	1	ADJUSTING NUT
	16	MA786772	1	LOCKING TAB
	17	MA801159	1	ROTATION ARROW
	18	MB800679	1	COMP. SEAL PLATE
	19	MA801110	1	SHAFT PROTECTOR
	20	MD801091	1	THRUST PLATE
	21	MC801166	2	PISTON COVER
	22	MA800670	1	FLANGE COVER 2"
	23	MA800669	1	FLANGE COVER 2½"
	24	MC800445	1	SHIPPING TAG
	25	MA800683	1	DRAIN INSTR. TAG
	26	MC800803	1	INSTL. & OPER. TAG
	27	MB800511	1	NAME PLATE
	28			
	29			
	30	16 x 108	1	NUT
	31	99 x 124	6	SPRING PIN
	32	10 x 330	4	CAP SCREW
	33	10 x 258	8	CAP SCREW
	34	39 x 10	4	DRIVE SCREW
	35	98 x 24	1	BALL

142 OR 125	36	108 x 2	1	-2 PLUG
	37	108 x 6	1	-6 PLUG
	38	120 x 29	1	CAP PLUG
	39	120 x 10	4	CAP PLUG
	40			
	41			
	42			
	43	2139N-7	2	O-RING (PISTON COVER)
	44	2110N-7	2	O-RING (PISTON COVER)
	45	2218N-7	2	O-RING (SUCTION)
	46	2264N-7	1	O-RING (HSG)
	47	2119N-9	1	O-RING (COMP)
	48	2116N-9	1	O-RING (COMP)
	49	2113N-9	1	O-RING (COMP)
	50	2108N-9	1	O-RING (COMP)
	51	2145N-9	1	O-RING (THR. PLT.)
	52	2157N-9	1	O-RING (THR. PLT.)
	53	2164N-9	1	O-RING (THR. PLT.)
	54			
	55			
142	56	MC800837	1	CAM RING
	57	MB800201	11	FULL VANE
	58	MB800439	22	HALF VANE
	59			
125	60			
	61	MC801149	1	CAM RING
	62	MB800439	44	HALF VANE
	63			
	64			
	65			

Note:

1. Seal Kit: SKPVV12530/14230
2. Rotating Group Repair Kit:
PVV125 R.H. ROT.:RKPVV125R30
PVV125 L.H. ROT.:RKPVV125L30
PVV142 R.H. ROT.:RKPVV142R30
PVV142 L.H. ROT.:RKPVV142L30
3. Volume Stop Kit: 800819X7005
4. Replacement Bushing Kit: 801069
Bushing Only: 800776 (2 Per Pump)

CAUTION

These service parts are intended for use in hydraulic pumps. Incorrect installation or assembly of these parts could cause the pump or pumps being repaired to fail in subsequent use, or to operate incorrectly.

The following precautions should be followed:

1. All parts should be cleaned and then lightly coated with mineral oil, or another lubricating fluid compatible with the system fluid being used, prior to assembly.
2. The pump should be disassembled, repaired, and re-assembled in a clean environment.
3. Use proper tools to disassemble and re-assemble the pump.
4. If you are uncertain as to how to install these parts, you should obtain assistance either from a Parker Hannifin distributor, or from the Fluidpower Pump Division.

30

R	66	MD801093	1	PORT PLATE - R.H.
L	66	MD801094	1	PORT PLATE - L.H.

OMIT	70	MD801163	1	REAR CVR - REAR PORT
2	71	2243N-7	1	O-RING
	72	MB801193	1	COVER PLATE
	73	MD801165	1	REAR CVR - SIDE PORT
	74	12 x 306	4	HEX HD BOLT
	75	36 x 13	4	LOCK WASHER

OMIT	76	MD800252	1	ROTOR
B	77	MA800332	1	KEY
	78			
	79	MD800496	1	ROTOR-SPLINED
	80			

OMIT	81			
2	DELETE (1) MC801166 & (1) 99 x 124			
	82	MC800819	1	VOL STOP COVER
	83	MB800340	1	VOL STOP PIN
	84	2010N-7	1	O-RING
	85	17 x 141	1	JAM NUT
	86	12 x 308	1	HEX HEAD SCREW
	87			
3	DELETE (11) MB800201 ON PVV142			
	DELETE (22) MB800439 ON PVV 125			
	88	MB800341	22	HALF VANE-PLATED
	89			
4	DELETE (1) 108 x 6			
	90	117 x 118	1	DOWEL PIN
	91	120 x 13	1	CAP PLUG
	92			
6	DELETE (1) MD800252			
	93	MD800525	1	ROTOR-THRU SHAFT
	AH	MC801200	1	AH ADAPTER KIT
	B	MC801201	1	B ADAPTER KIT
	BH	MC801202	1	BH ADAPTER KIT
	C	MC801203	1	C ADAPTER KIT
	D	MC801204	1	D ADAPTER KIT
	T	99		
	100			

M	101	MC801142	1	REMOTE COMP. ASSEMBLY
	102	108 x 4	1	-4 PLUG
	103			
ME	104	MC801143	1	REM COMP/EXT SENSE
	105	120 x 8	1	CAP PLUG
	106			
A	107	MC801143	1	REM COMP/EXT SENSE
	108	MA786635	1	ORIFICE ASSEMBLY
	109	120 x 13	1	CAP PLUG
	110			
S	DELETE (1) MC801166 & (1) 99 x 124			
	111	MC801142	1	REMOTE COMP ASSEMBLY
	112	MB800826	1	SERVO VOLUME ASS'Y
	113	120 x 8	1	CAP PLUG
SE	DELETE (1) MC801166 & (1) 99 x 124			
	115	MC801143	1	REM COMP/EXT SENSE
	116	MB800826	1	SERVO VOLUME ASS'Y
	117	120 x 8	1	CAP PLUG
SI	DELETE (1) MC801166 & (1) 99 x 124			
	119	MC801144	1	COMP ASS'Y W/PPC
	120	MB800826	1	SERVO VOL ASS'Y
	121			
PI	122	MC801144	1	COMP ASS'Y W/PPC
	123			
H	DELETE (1) MC801166 & (1) 99 x 124			
	124	MC801176	1	R.H. HORSEPOWER ASS'Y
	125			
	126	MC801142	1	REMOTE COMP ASS'Y

OMIT	
-	DELETE (4) 12 x 306
(DASH)	DELETE (4) 36 x 13
	DELETE (1) MB801193



Parker Hannifin Corporation
Hydraulic Pump/Motor Division
2745 Snapps Ferry Road
Greeneville, TN 37743
Phone: (423) 639-8151
Fax: (423) 787-2418
www.parker.com/pumpmotor