



PM 1626-10

## Service Parts Guide

Effective: February, 1997

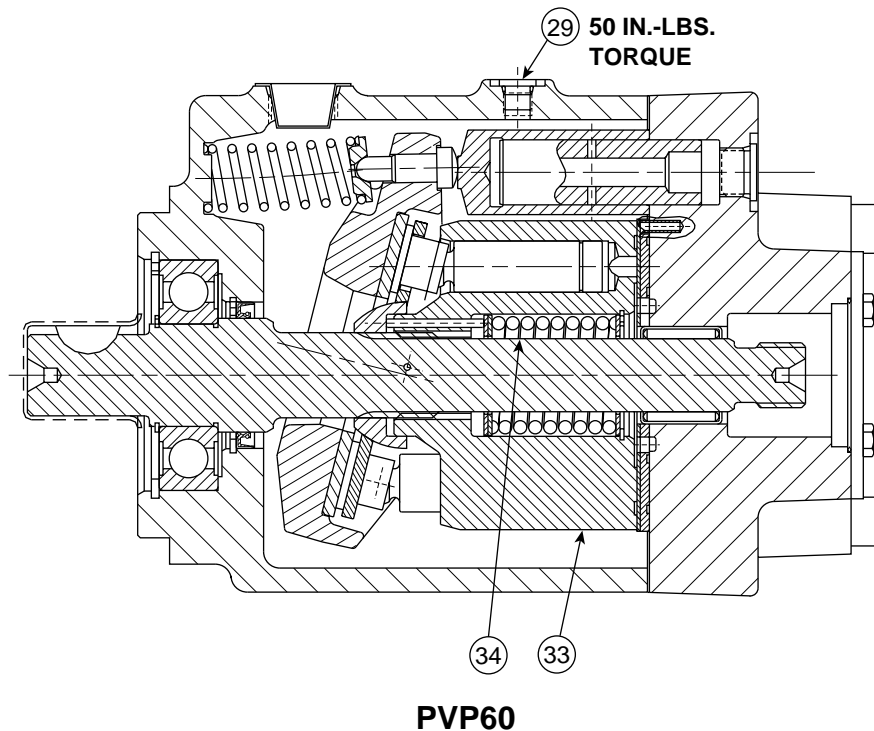
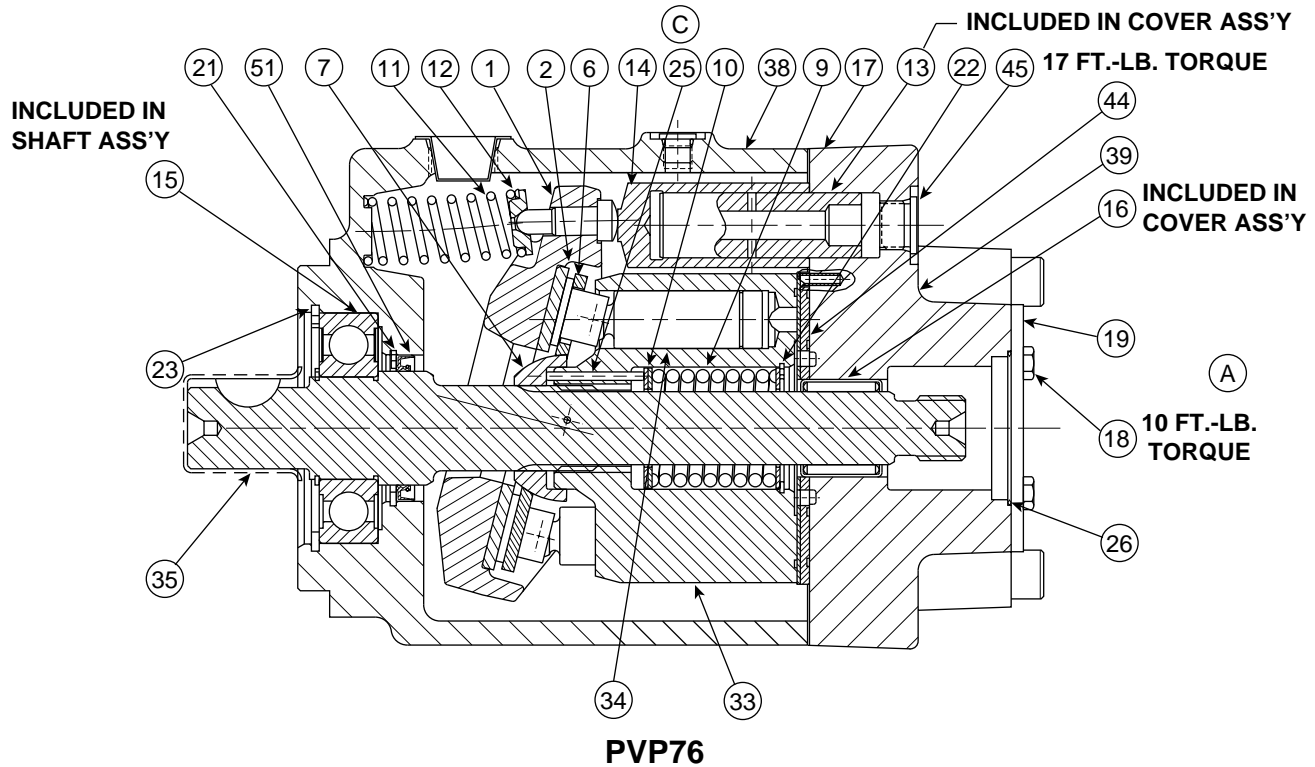
---

# PVP SERIES VARIABLE VOLUME PISTON PUMP

**Model PVP60 \* \* \* \* 10**

**Model PVP76 \* \* \* \* 10**

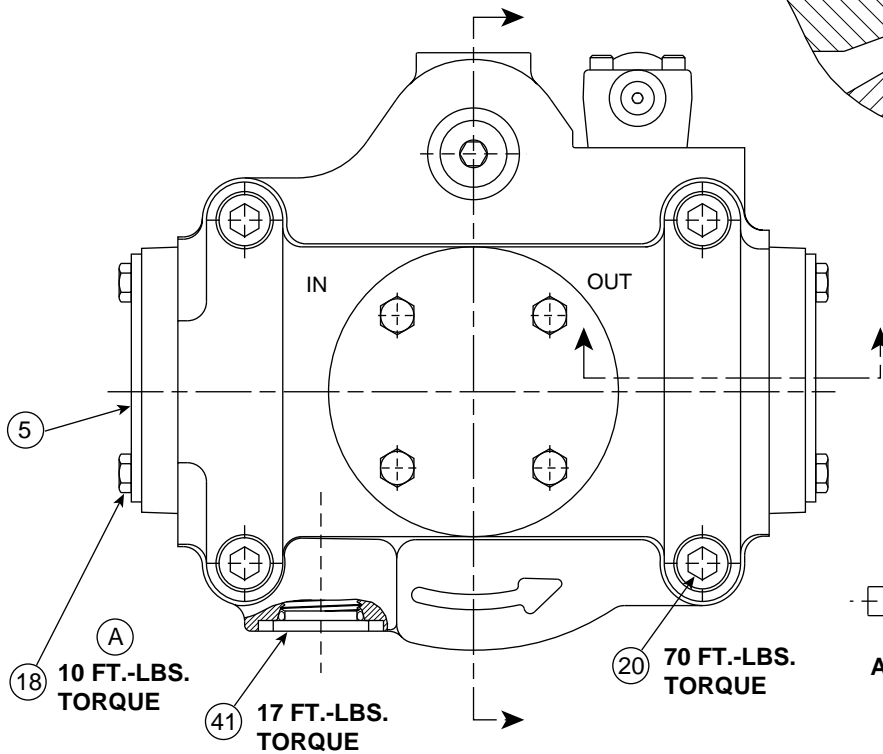
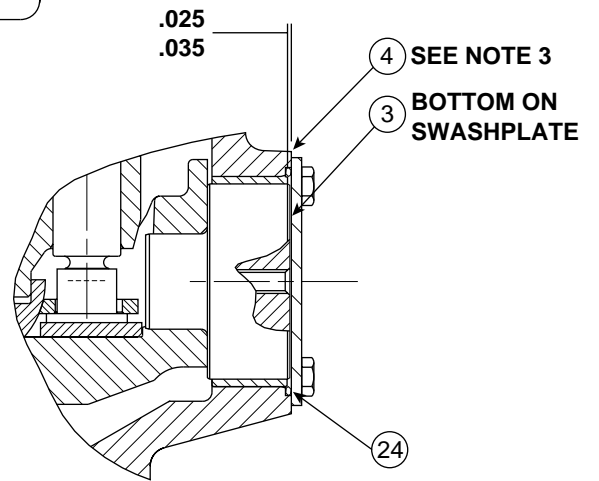
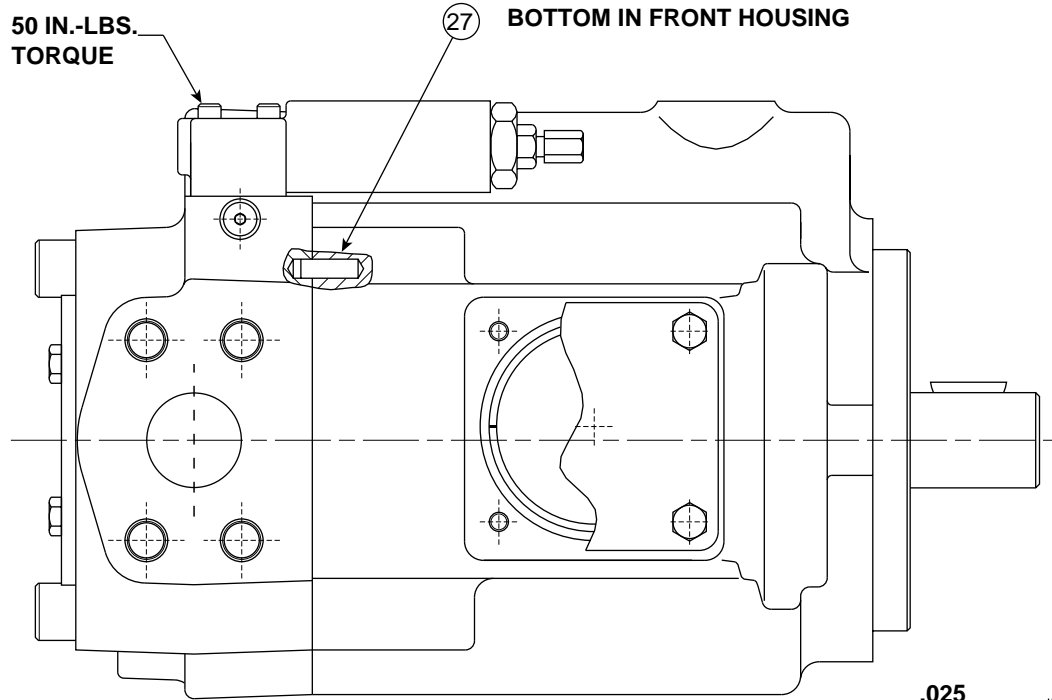
# REAR PORTED PUMP



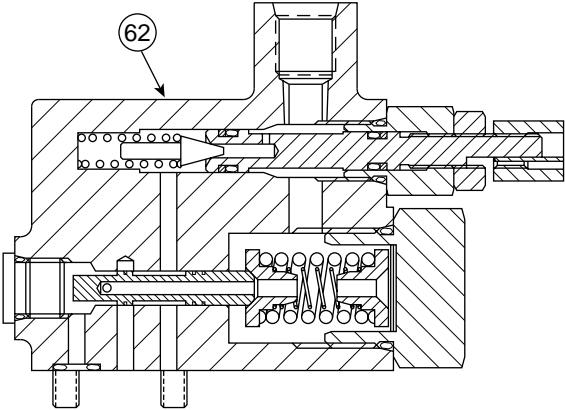
**Note:**

- ① Installed ht of item 13 (servo post) above item 39 (rear cover) to be 2.305/2.295 in.
- ② Installed ht of item 16 (needle brg) above item 39 (rear cover) to be .130/.150 in.
- ③ Install item 4 (bushing) .025 to .035 inches below housing trunnion boss.
4. Pumps shown are right hand (cw) rotation. Left hand rotation pumps have pressure, suction & cover drain port reversed. Compensator is also on opposite side.

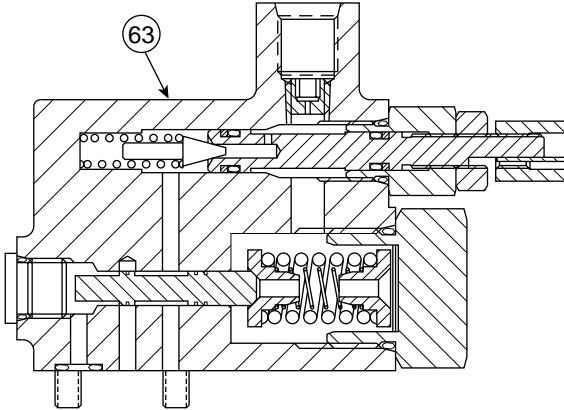
# SIDE PORTED PUMP



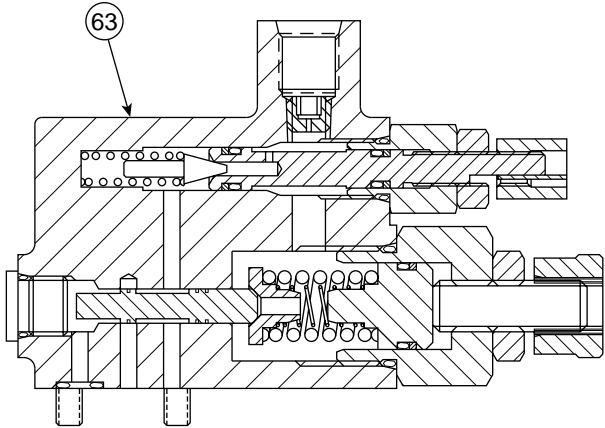
# CONTROL OPTIONS



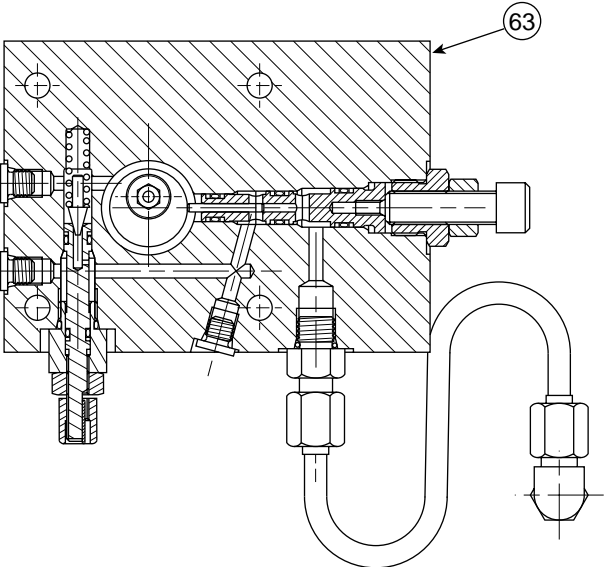
**REMOTE CONTROL OPTION "M"  
INTERNAL PRESSURE SENSE**



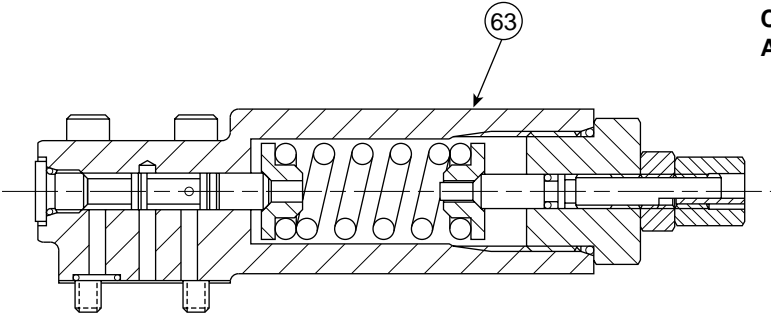
**REMOTE CONTROL OPTION "ME"  
EXTERNAL PRESSURE SENSE**



**LOAD SENSE CONTROL OPTION "A"**



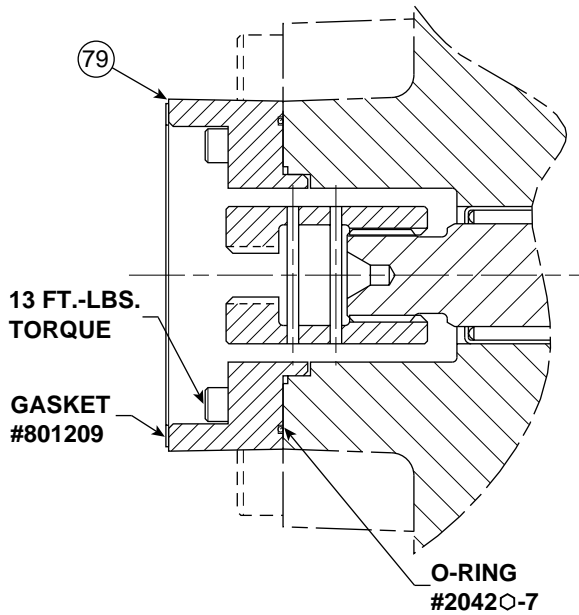
**HI-LO TORQUE CONTROL BLOCK  
CONTROL OPTIONS "HLM"  
AND "HLA" (SEE NOTE 1).**



**STANDARD CONTROL OPTION "OMIT"**

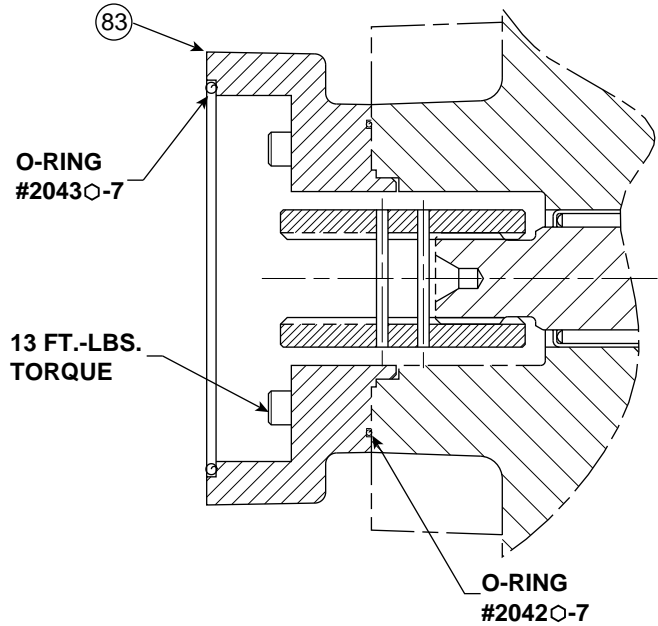
**Note:**  
1. For proper operation of Hi-Lo horsepower control (control options HLM and HLA) it must be used with corresponding compensator. "M" control for "HLM" and "A" control for "HLA".

# THRU SHAFT OPTIONS



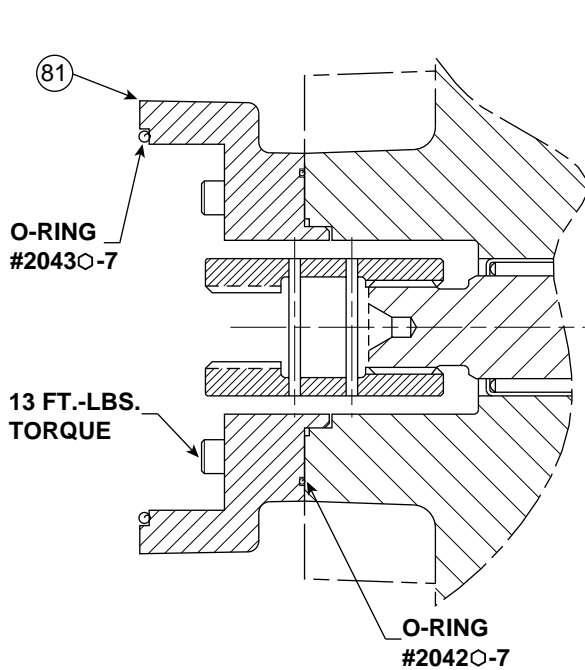
**THRU SHAFT VARIATIONS "6A4" AND "9A4"**  
REAR PUMP CONFIGURATION:

- SAE A 2 BOLT
- 3.25 PILOT DIAMETER
- 9 TOOTH 16/32 PITCH SPLINE COUPLER



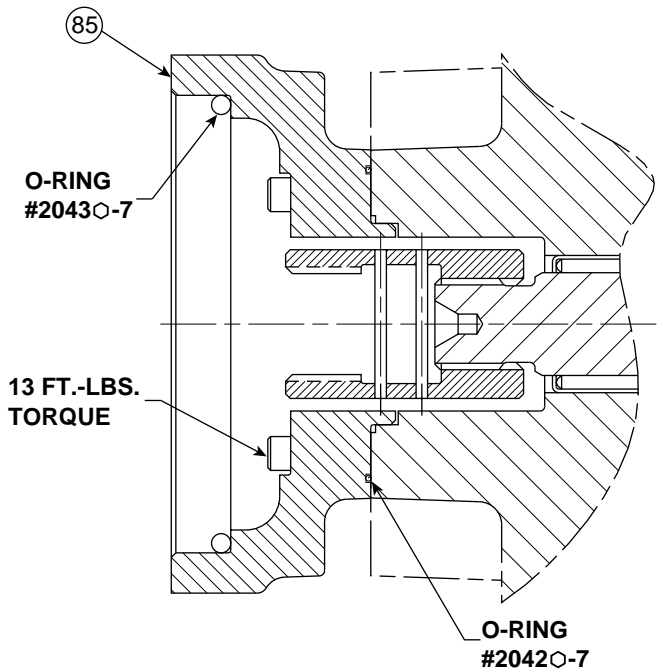
**THRU SHAFT VARIATIONS "6B4" AND "9B4"**  
REAR PUMP CONFIGURATION:

- SAE B 2 BOLT
- 4.00 PILOT DIAMETER
- 15 TOOTH 16/32 PITCH SPLINE COUPLER



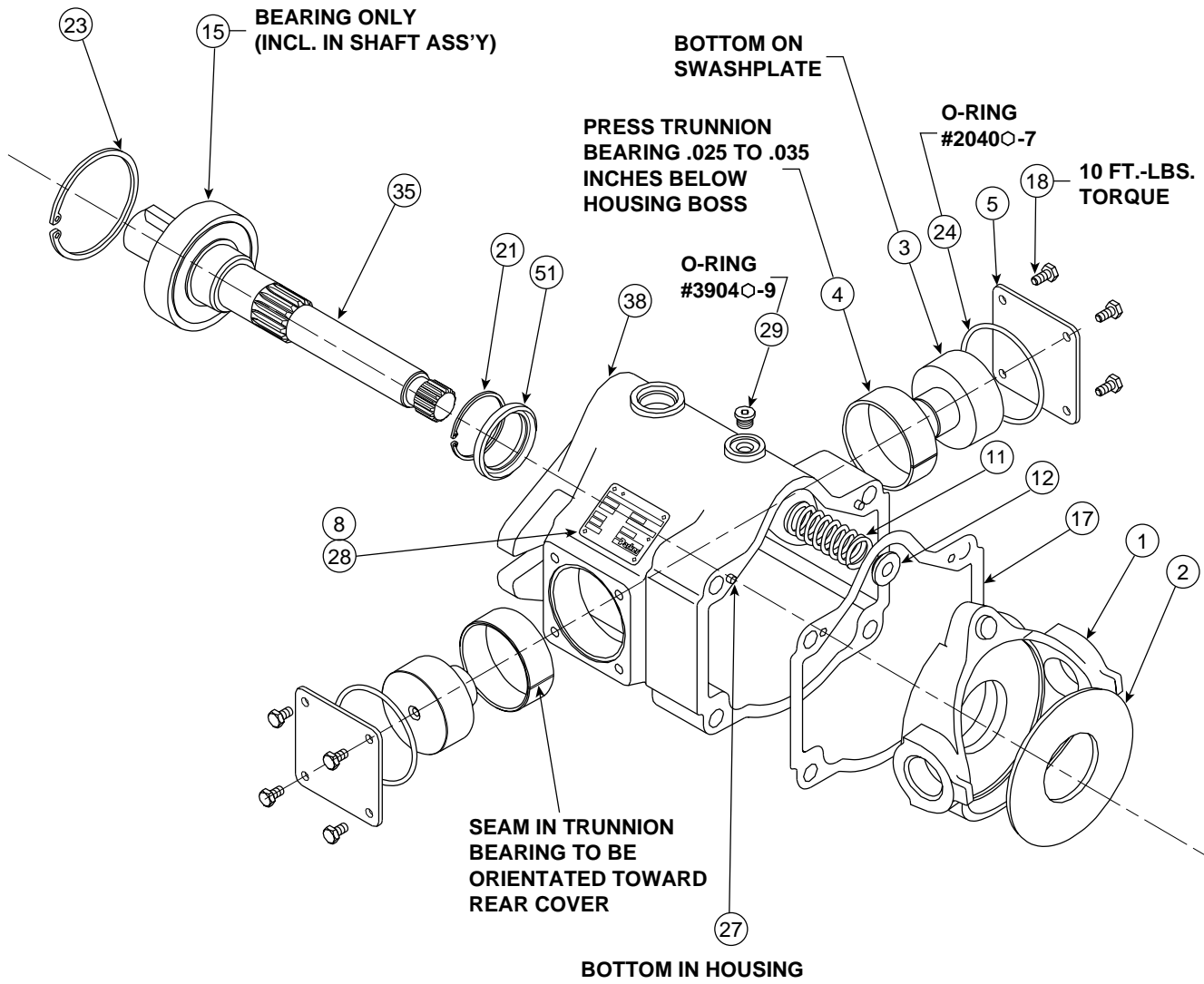
**THRU SHAFT VARIATIONS "6B3" AND "9B3"**  
REAR PUMP CONFIGURATION:

- SAE B 2 BOLT
- 4.00 PILOT DIAMETER
- 13 TOOTH 16/32 PITCH SPLINE COUPLER

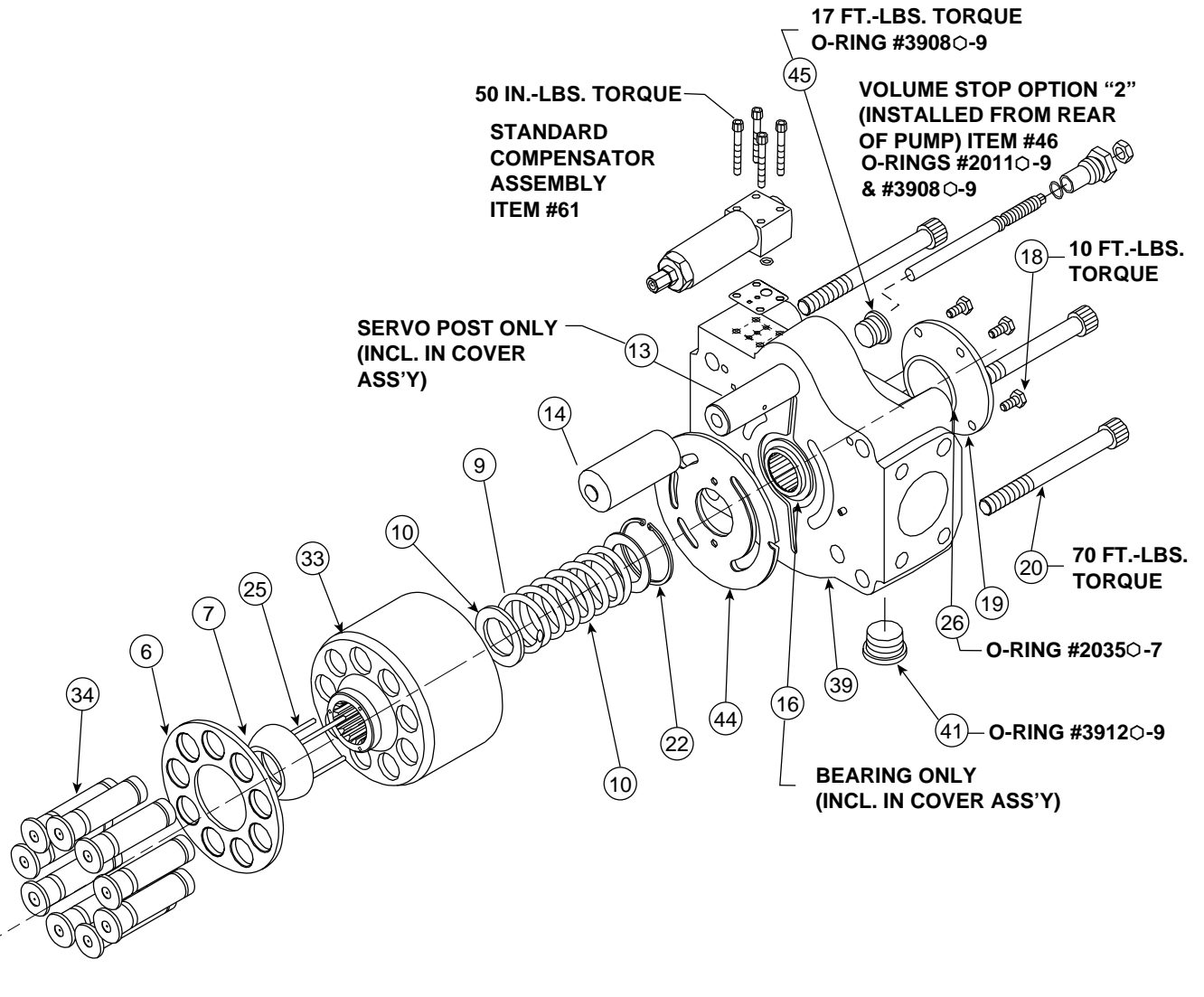


**THRU SHAFT VARIATIONS "6C3" AND "9C3"**  
REAR PUMP CONFIGURATION:

- SAE C 2 BOLT
- 5.00 PILOT DIAMETER
- 14 TOOTH 12/24 PITCH SPLINE COUPLER



**Note:** Pump shown is right hand (CW) rotation.  
 For a left hand (CCW) rotation pump, the port  
 plate and port orientation will be reversed.



**Service Notes:**

- Use a clean lubricant (compatible with the working fluid) on all pump components during assembly.
- Thoroughly clean the reservoir, suction lines, suction strainer, drain lines, etc. before reinstalling the pump. Most premature pump failures occur when contaminants from a previous failure have not been completely removed from the system, or cause for previous failure is still present (i.e. water in oil, bypassing filter, etc.).
- Always fill the case with clean fluid before starting a new or serviced pump (fill as high as inlet port will allow on a PAVC style pump). For flooded suction, purge air from suction lines by cracking the inlet fitting or vent plug on pump body. This should prevent an airlock condition and allow for faster priming.
- Check for proper shaft rotation if there is a possibility it may have changed during a system rebuild.
- Start pump with an open circuit whenever possible. Reduce the compensator to its minimum setting during start-up. Cycle the pump on and off stroke while increasing the compensator to its required setting, this will assist in break-in of new components and help purge air from the case.

ITEM	PART NUMBER	QTY	DESCRIPTION
P 1	788102	1	SWASHPLATE ASS'Y
2	788103	1	SLIPPER PLATE
P 3	788115	2	TRUNNION PIN
4	788137	2	TRUNNION BUSHING
5	788134	2	TRUNNION COVER
6	788113	1	SLIPPER RETAINER
7	788114	1	BALL SEAT
8	800511	1	NAMEPLATE
9	788135	1	BARREL SPRING
10	788136	3	BARRELL SPRING WASHER
11	787780	1	SWASH PLATE SPRING
12	787769	1	SWASH SPRING GUIDE
V 13	788120	1	SERVO POST
14	788121	1	SERVO PISTON
15	788138	1	BALL BEARING
16	788139	1	NEEDLE BEARING
17	788133	1	HOUSING GASKET
18	12X221	8	HEX BOLT
19	787232	1	COVER PLATE
20	10X303	4	CAP SCREW
21	56X329	1	RETAINING RING (SEAL)
22	56X324	1	RETAINING RING (BARL)
23	56X362	1	RETAINING RING (BRG OD)
P 25	23X72	3	BARREL PIN
27	99X127	2	ROLL PIN (HOUSINGS)
28	39X10	2	DRIVE SCREW

R	44	788123	1	PORT PLATE - CW
L	44	788124	1	PORT PLATE - CCW

2	R	39	788235	○	1	CVR ASS'Y-SIDE FLNG-RH
	L	39	788236	○	1	CVR ASS'Y-SIDE FLNG-LH
8	R	39	788518	○	1	CVR ASS'Y-SIDE 6149-RH
	L	39	788519	○	1	CVR ASS'Y-SIDE 6149-LH
9	R	39	788237	○	1	CVR ASS'Y-SIDE METRIC-RH
	L	39	788238	○	1	CVR ASS'Y-SIDE METRIC-LH

OMIT	2	38	788105		1	HOUSING ASS'Y - SAE
B	41	788207-12	○		1	SHIPPING PLUG
	8	38	788513		1	HOUSING ASS'Y - 6149
C	41	120X28			1	CAPLUG
	9	38	788188		1	HOUSING ASS'Y - MIX
D	41	120X28			1	CAPLUG
	9	38	788189		1	HOUSING ASS'Y - METRIC
K	41	120X28			1	CAPLUG

OMIT	35	788230		1	SHAFT ASS'Y-"C" STR
B	35	788231		1	SHAFT ASS'Y-"C" SPL
C	35	788232		1	SHAFT ASS'Y-"CC" STR
D	35	788233		1	SHAFT ASS'Y-"CC" SPL
K	35	788234		1	SHAFT ASS'Y-"K" KEYED

ITEM	PART NUMBER	QTY	DESCRIPTION	
60	33	788112	1	BARREL
	34	788090	9	PISTONS
76	33	788111	1	BARREL
	34	788089	9	PISTONS

10	1000 PSI COMP. SET
20	2000 PSI COMP. SET
30	3000 PSI COMP. SET
36	3600 PSI COMP. SET
45	4500 PSI COMP. SET
50	5000 PSI COMP. SET

PVP60 ONLY  
PVP60 ONLY





	ITEM	PART NUMBER	QTY	DESCRIPTION
OMIT	78			NO THRU SHAFT
6	A4	788147	1	"A" PILOT, 9T SPLINE
	B3	788148	1	"B" PILOT, 13T SPLINE
	B4	788149	1	"B" PILOT, 15T SPLINE
	C3	788150	1	"C" PILOT, 14T SPLINE
9	A4	788203	1	"A" PILOT, 9T SPLINE
	B3	788202	1	"B" PILOT, 13T SPLINE
	B4	788201	1	"B" PILOT, 15T SPLINE
	C3	788200	1	"C" PILOT, 14T SPLINE

PUMP DESIGN SERIES

OMIT	PUMP NOT PAINTED
P	PUMP PAINTED

OMIT	51	787549	1	SHAFT SEAL - BUNA
	24	2149N-7	1	O-RING
	26	2035N-7	1	O-RING
	29	108X6	1	PLUG
V	51	788043	1	SHAFT SEAL - VITON
	24	2149V-7	1	O-RING
	26	2035V-7	1	O-RING
	29	108X6V	1	PLUG

OMIT	45	108X8	1	PLUG (VOLUME STOP)
2	46	788239	1	VOLUME STOP KIT

OMIT	61	788240	1	STANDARD COMP ASS'Y
M	62	788241	1	REMOTE COMP ASS'Y (INT)
ME	63	788242	1	REMOTE COMP ASS'Y (EXT)
A	64	788243	1	LOAD SENSE COMP ASS'Y
HLM	65	788489	1	HI-LO TORQUE ASS'Y
HLA	65	788489	1	HI-LO TORQUE ASS'Y

NOTES:

1. O-RING COMPOUND DESIGNATION - (OMIT) =NITRILE, (V) =VITON
2. SEAL KIT P/N SKPVP □ ○ \*\* (\*\* - DESIGN SERIES)

  - 60 (60 CC/REV)
  - 76 (76 CC/REV)
3. ROTATING GROUP KIT RRPV □ □ \*\* (\*\* - DESIGN SERIES)

  - R (CW)
  - L (CCW)
  - 60 (60 CC/REV)
  - 76 (76 CC/REV)
4. DO NOT CATALOG - FOR INTERNAL REFERENCE ONLY.
5. FOR PROPER OPERATION OF HI-LO TORQUE CONTROL, IT MUST BE USED WITH THE CORRECT COMPENSATOR ASSEMBLY. "HLM" CONTROL MUST BE USED WITH "M" (REMOTE) CONTROL ASSEMBLY. "HLA" CONTROL MUST BE USED WITH "A" (LOAD SENSE) CONTROL ASSEMBLY.



**Parker Hannifin Corporation**  
Hydraulic Pump/Motor Division  
2745 Snapps Ferry Road  
Greeneville, TN 37745 USA  
Tel: (423) 639-8151  
Fax: (423) 787-2418  
Web site: [www.parker.com/pumpmotor](http://www.parker.com/pumpmotor)