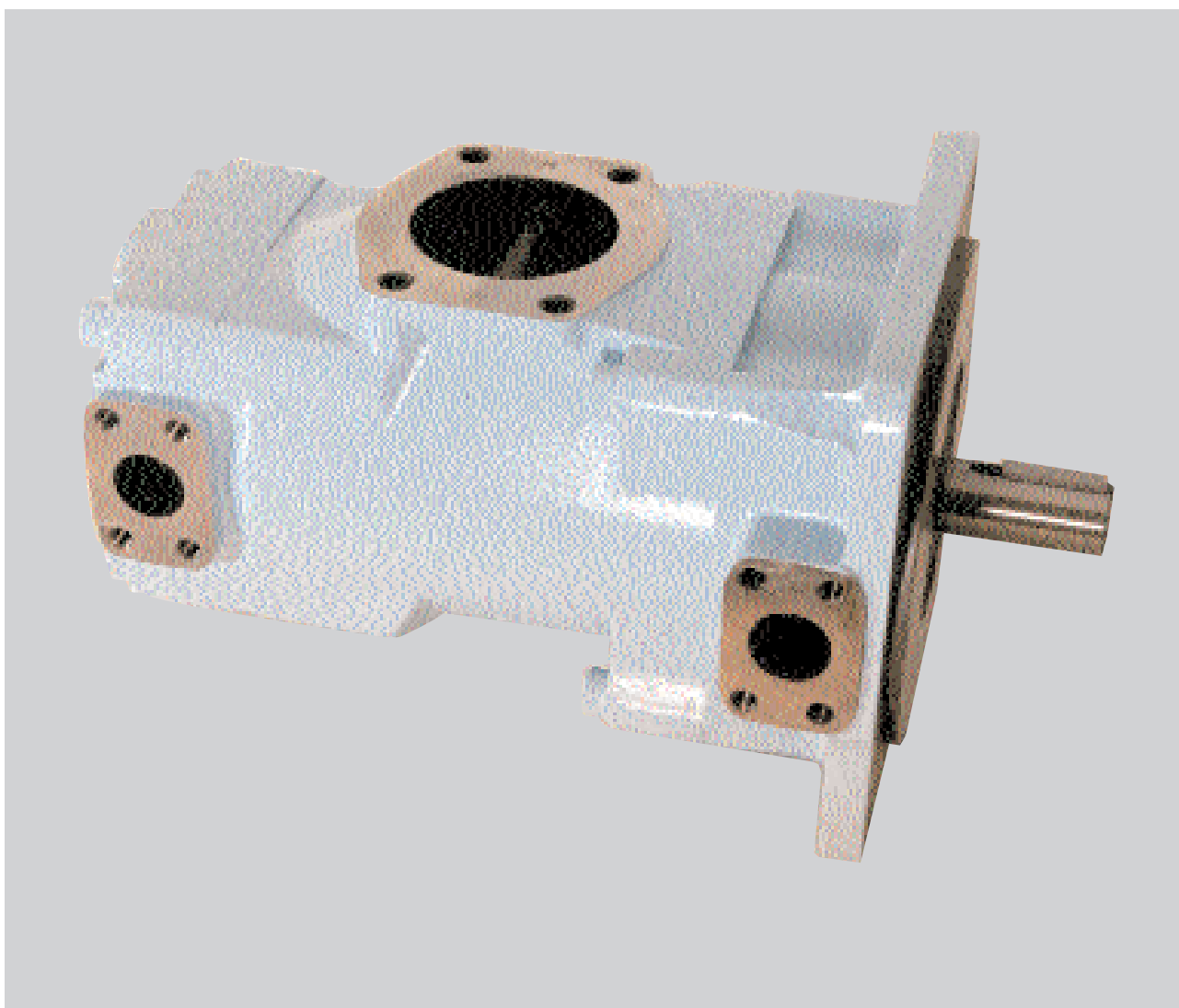


**DENISON HYDRAULICS**  
**high performance hydraulic**  
**new vane double pumps**  
**T6EE - T6EES**



Publ. 1 - EN0735 - A      06 / 99 / 2500 / FB Replaces :

L13 - 10735 - 1

**DENISON** | **Hydraulics**

## ORDERING CODE - T6EE - T6EES SERIES

### Model No.

**T6EE or T6EES - 066 - 045 - 1 R 00 - A 1 0 - 00 - ..**

**T6EE series** - 250 B4HW  
ISO 3019-2 mounting flange  
**T6EES series** - SAE E 4 bolts  
Mounting flange J744c

#### Displacement P1 and P2

042 = 132,3 ml/rev  
045 = 142,4 ml/rev  
050 = 158,5 ml/rev  
052 = 164,8 ml/rev  
062 = 196,7 ml/rev  
066 = 213,3 ml/rev  
072 = 227,1 ml/rev  
085 = 268,0 ml/rev

#### Type of shaft T6EE

2 = keyed G45N (ISO 3019-2)

#### Type of shaft T6EES

1 = keyed (SAE CC)  
3 = splined (SAE CC)  
4 = splined (SAE D & E)  
5 = keyed (SAE D & E)

#### Modifications

#### Mounting w/connection variables

	P1 & P2 = 1 <sup>3/2</sup> - S = 4 <sup>3/2</sup>	
	UNC	Metric
T6EE		M0
T6EES	00	M0

#### Coupling adaptor

0 = none  
2 = SAE B  
3 = SAE BB

#### Seal class

1 = S1 - BUNA N  
4 = S4 - EPDM  
5 = S5 - VITON

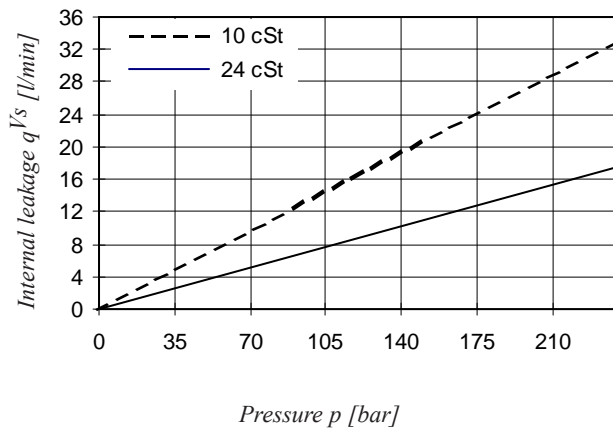
#### Design letter

00 = standard

#### Direction of rotation (view on shaft end)

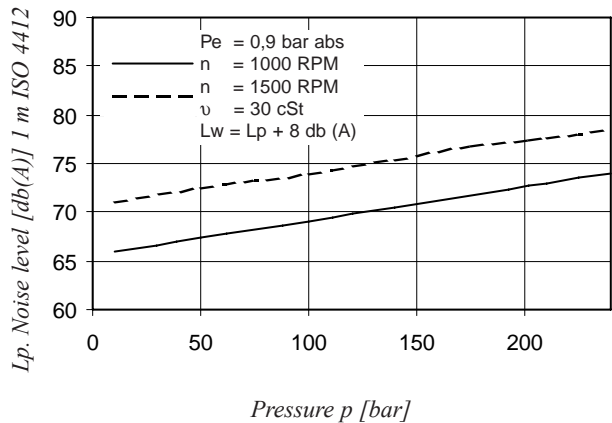
R = Clockwise  
L = Counter-clockwise

### INTERNAL LEAKAGE (TYPICAL)



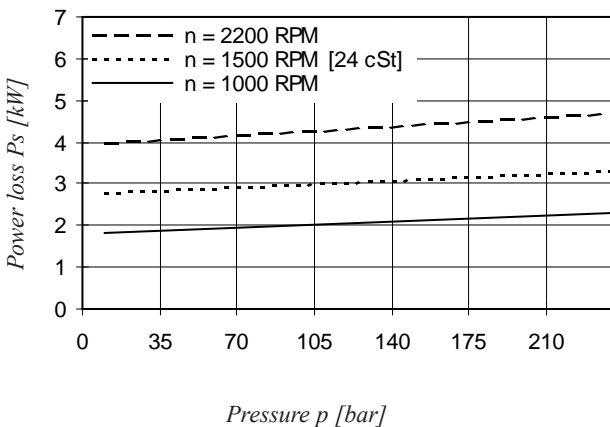
Do not operate pump more than 5 seconds at any speed or viscosity if internal leakage is higher than 50% of theoretical flow. Total leakage is the sum of each section loss at its operating conditions.

### NOISE LEVEL (TYPICAL) T6EE 050 - 050



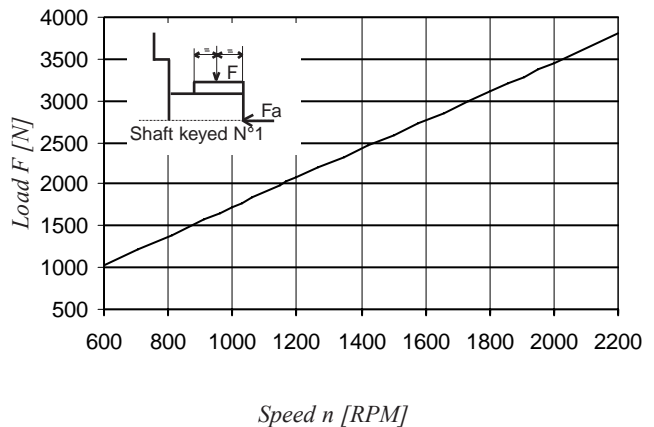
Double pump noise level is given with each section discharging at the pressure noted on the curve.

### POWER LOSS HYDROMECHANICAL (TYPICAL)

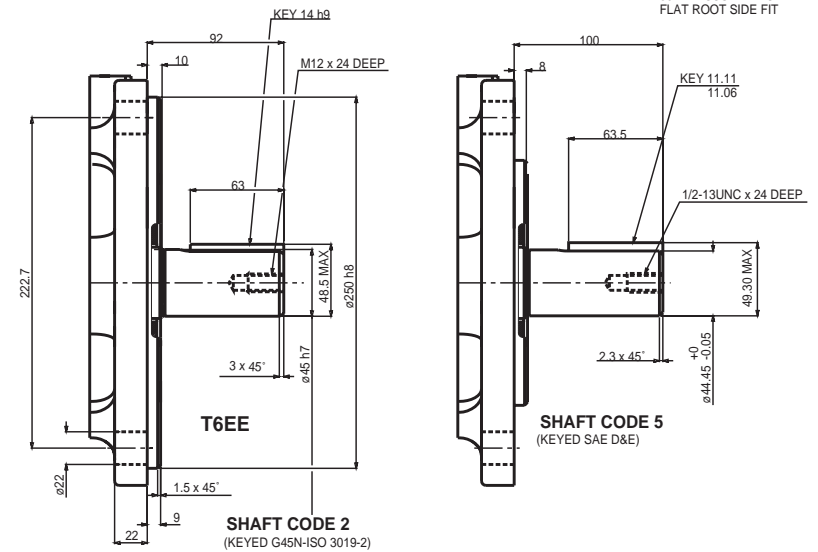
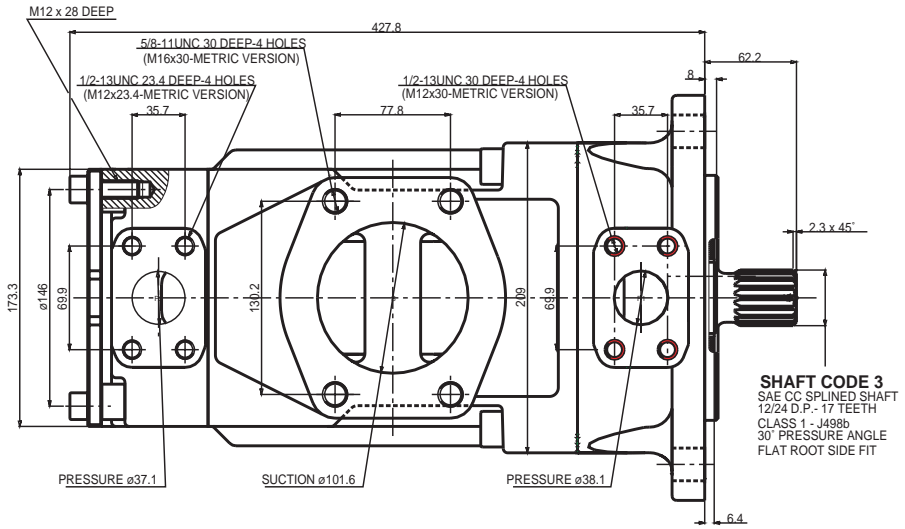
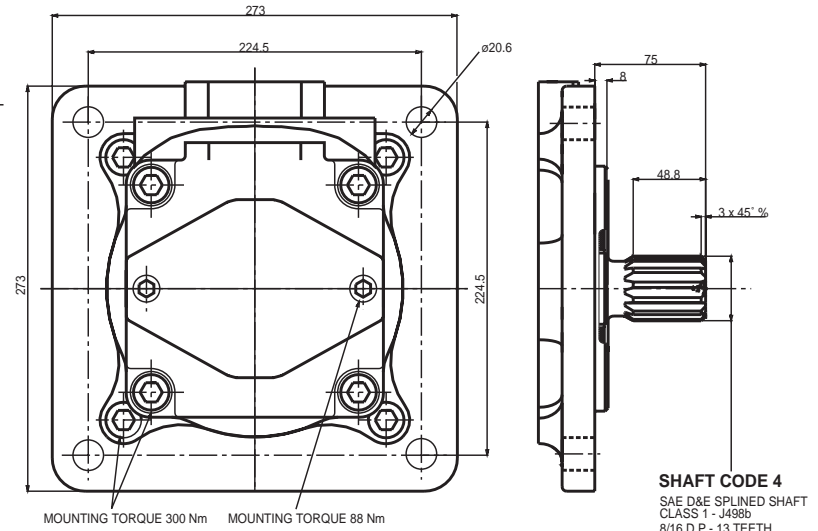
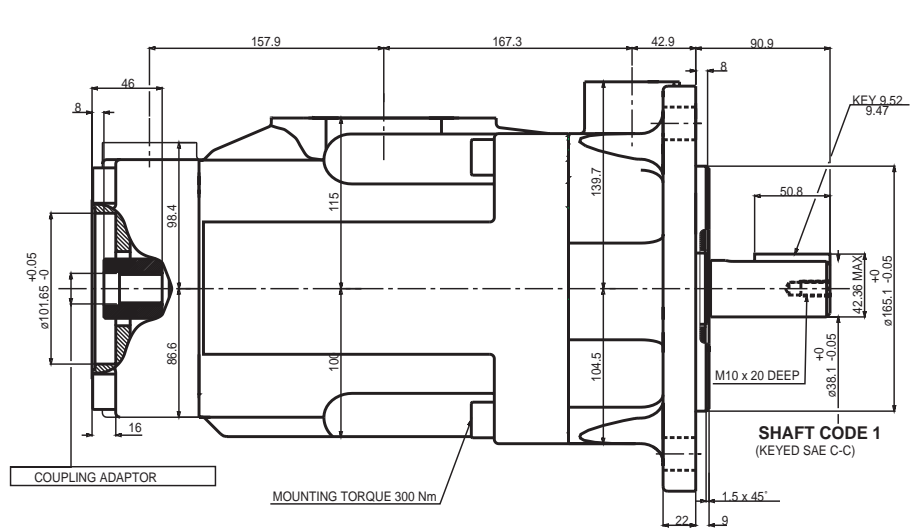


Total hydromechanical power loss is the sum of each section at its operating conditions.

### PERMISSIBLE RADIAL LOAD



Maximum permissible axial load  $F_a = 2000\text{ N}$



Shaft torque limits [ml/rev x bar]			
Shaft	Vi x p max.	Coupling	Vi x p max.
1	72300	SAE B	20600
2	114600	SAE BB	32670
3	126800		
4	126800		
5	118340		